



Earth and Space

Learning Objective:
To describe the movements of
the Sun, Earth and Moon.



What do you already know about Earth and space?
Do you know the scientific meaning of any of these words
and how they might relate to this science topic?

seasons

day

year

Sun

Moon

spherical

axis

orbit

planet

star

eclipse

night

rotate

month



Sun



Moon



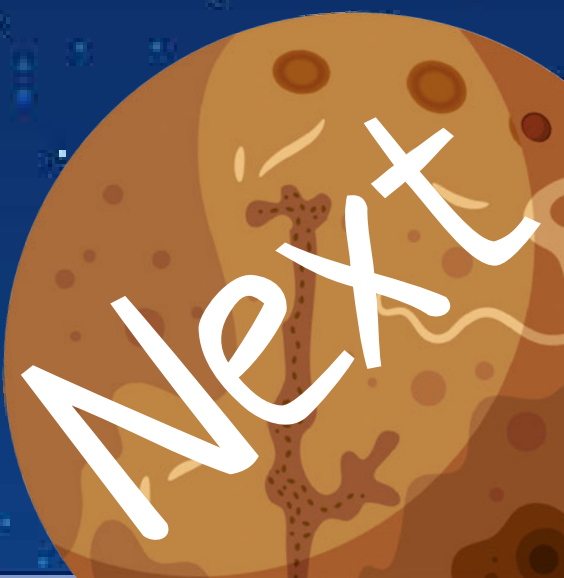
Earth



This lesson we will be focusing on these three celestial bodies. Can you tell your partner what they are?
What scientific language can you use?



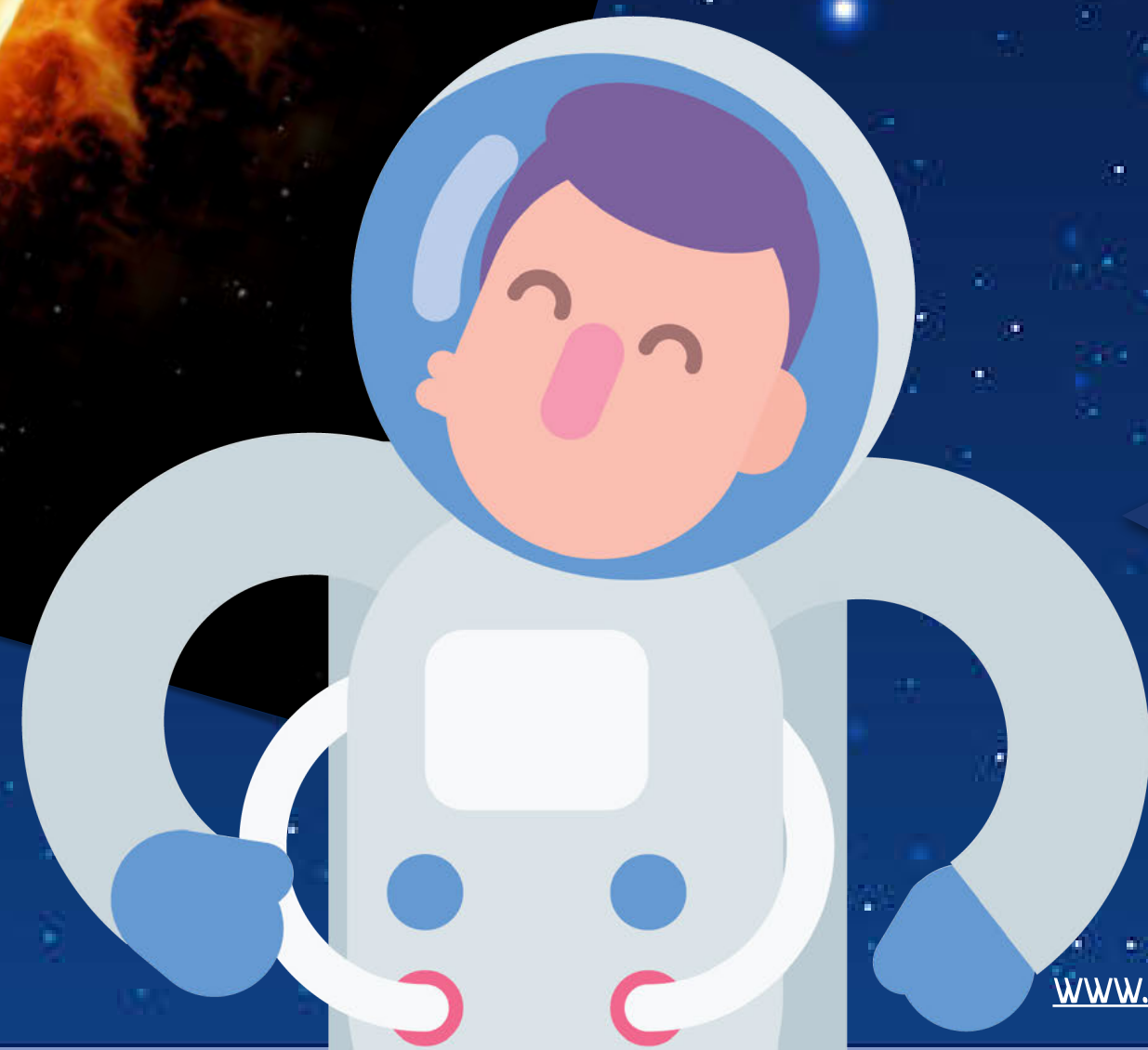
celestial: adj. relating to the sky or outer space



Sun

The Sun is at the centre of our solar system. It is a star made of burning gases. It burns at over 5000°C which provides the solar system with light and warmth.

The light from the Sun only takes eight minutes to travel the 149.6 million km to Earth!

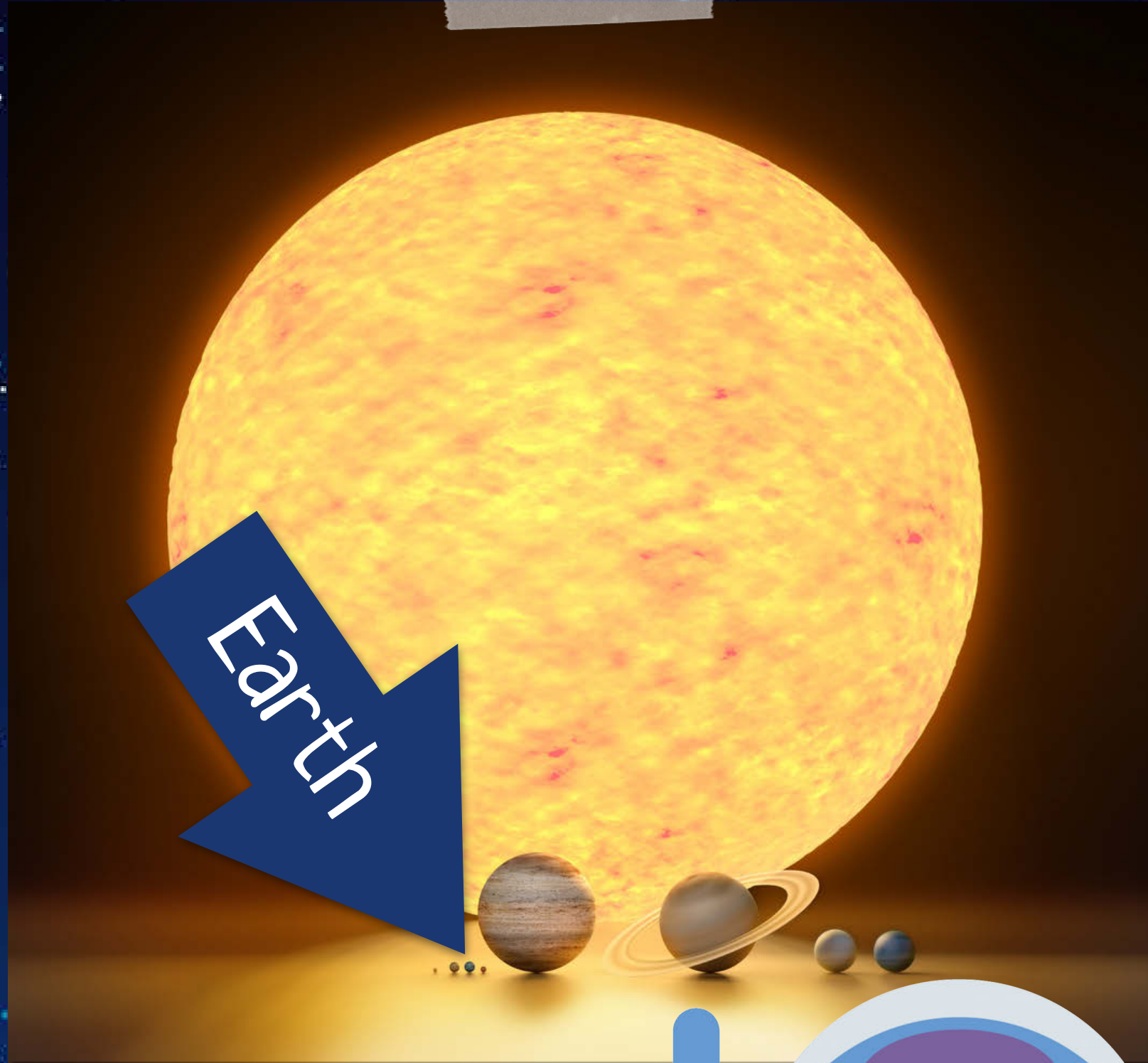
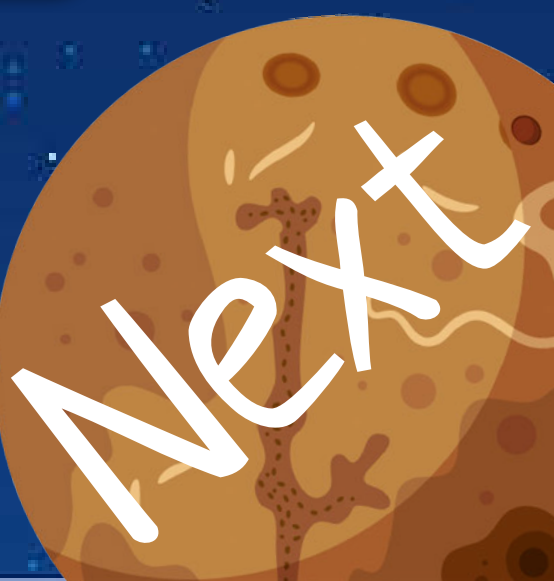


Sun

The Sun is the biggest object in our solar system. It makes up 98% of the total mass!

The Sun has a roughly spherical shape which is about 1,400,000 km in diameter. Earth has a diameter of just over 13,500 km. This means the Sun could fit 1,300,000 Earths inside it!

roughly spherical: adj. roughly shaped like a ball



Earth

Earth is a planet. It is the third planet from the Sun and is the only one which has the correct conditions to sustain human life (us!).

Earth is also roughly spherical in shape. We say 'roughly' because we know that no planets, moons or stars are perfect spheres.

planet: noun. A celestial body which orbits around a star

Back

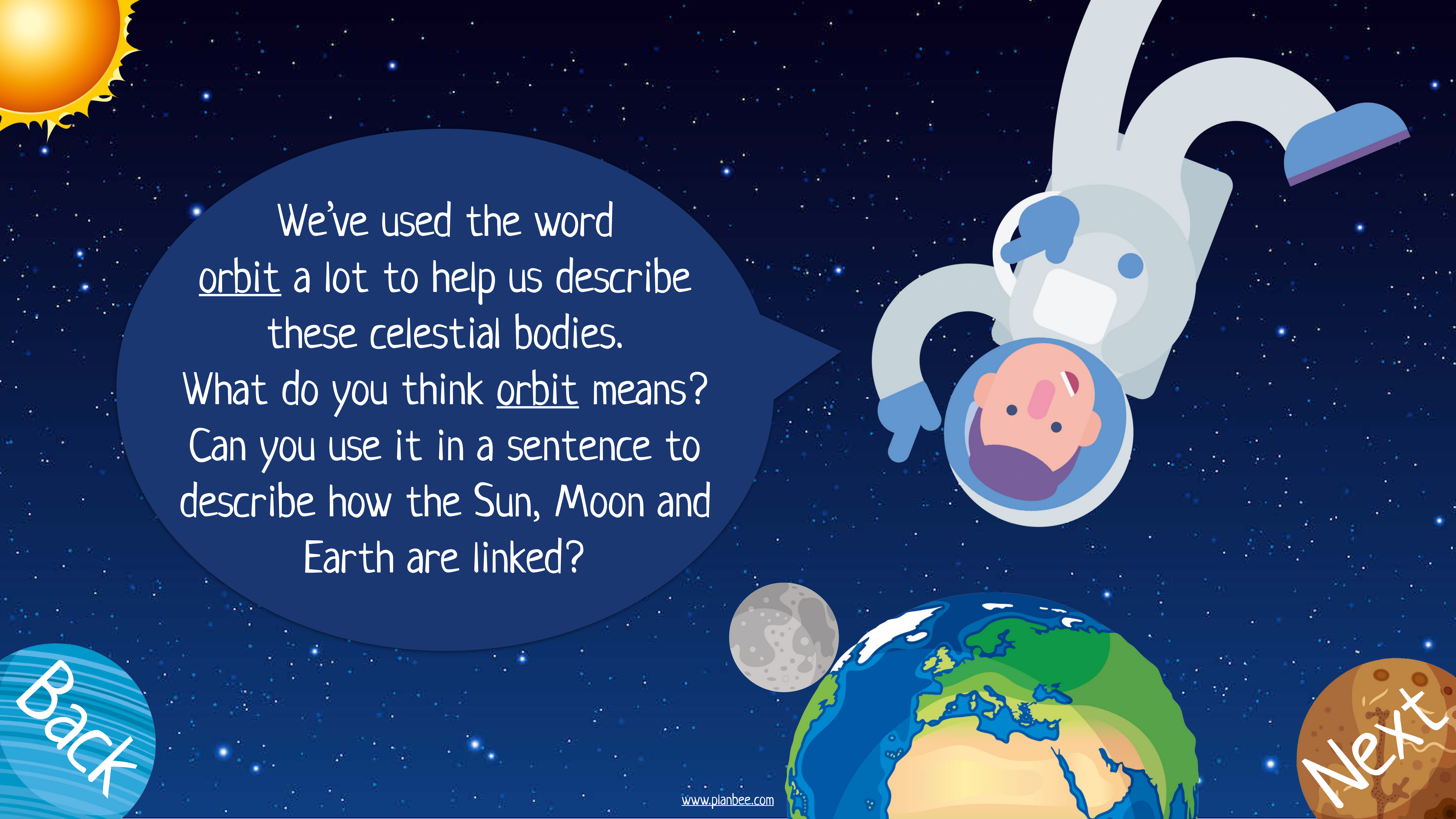
Next

Moon

The Moon is a special celestial object called a natural satellite. This means it is a naturally occurring object (not man-made) which orbits a planet. The Moon orbits Earth but doesn't have anything orbiting it.

The Moon is also, you guessed it, roughly spherical in shape. It is about a quarter of the size of Earth.



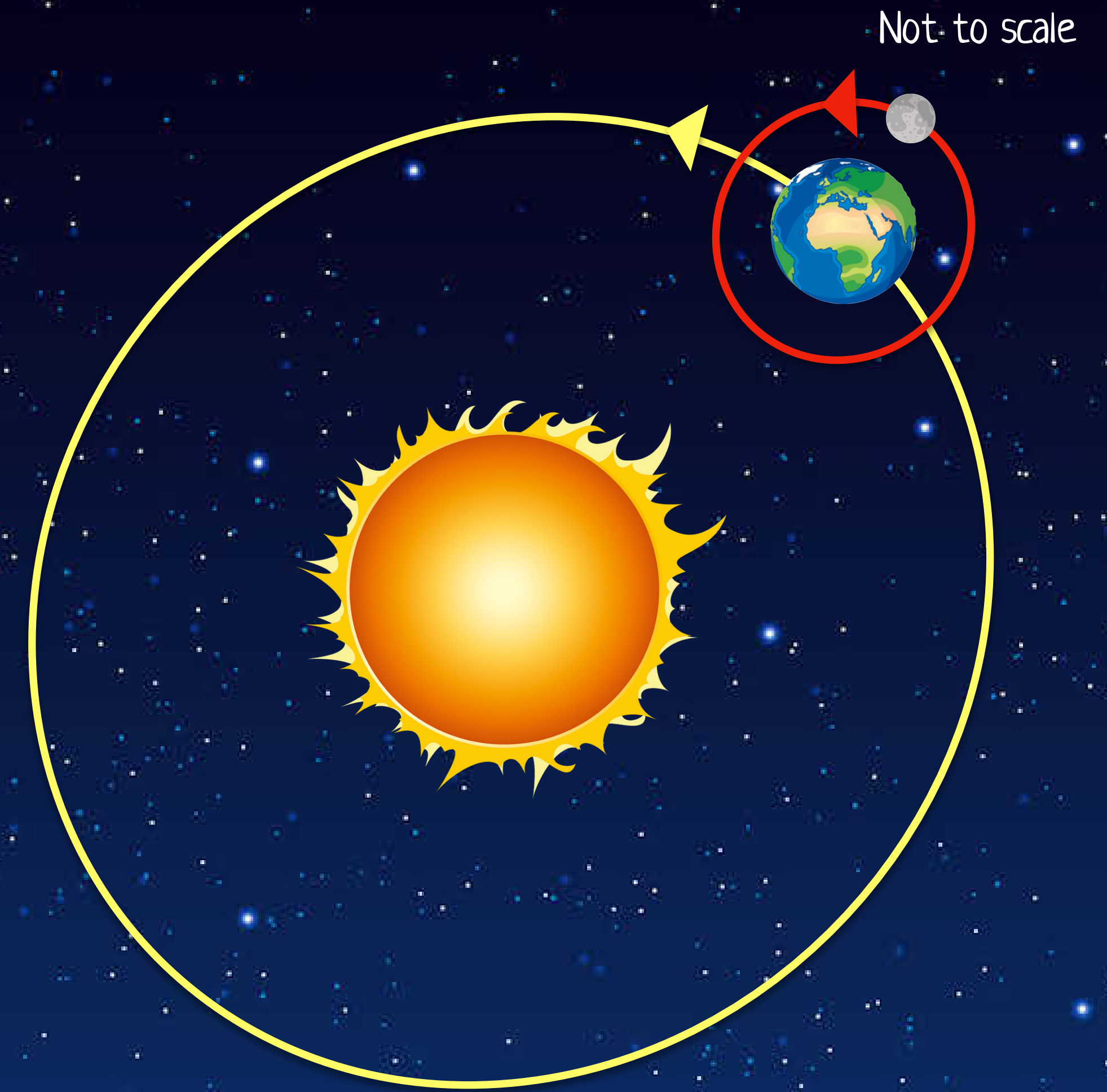


We've used the word orbit a lot to help us describe these celestial bodies. What do you think orbit means? Can you use it in a sentence to describe how the Sun, Moon and Earth are linked?

Back

Next

An orbit is a repeating path that an object in space takes around another, larger object. The path of an orbit is normally elliptical or oval shaped, rather than a perfect circle.



Earth and the Moon, as well as the other planets in the solar system, orbit in an anticlockwise direction.



How long does
it take Earth
to orbit the
Sun?

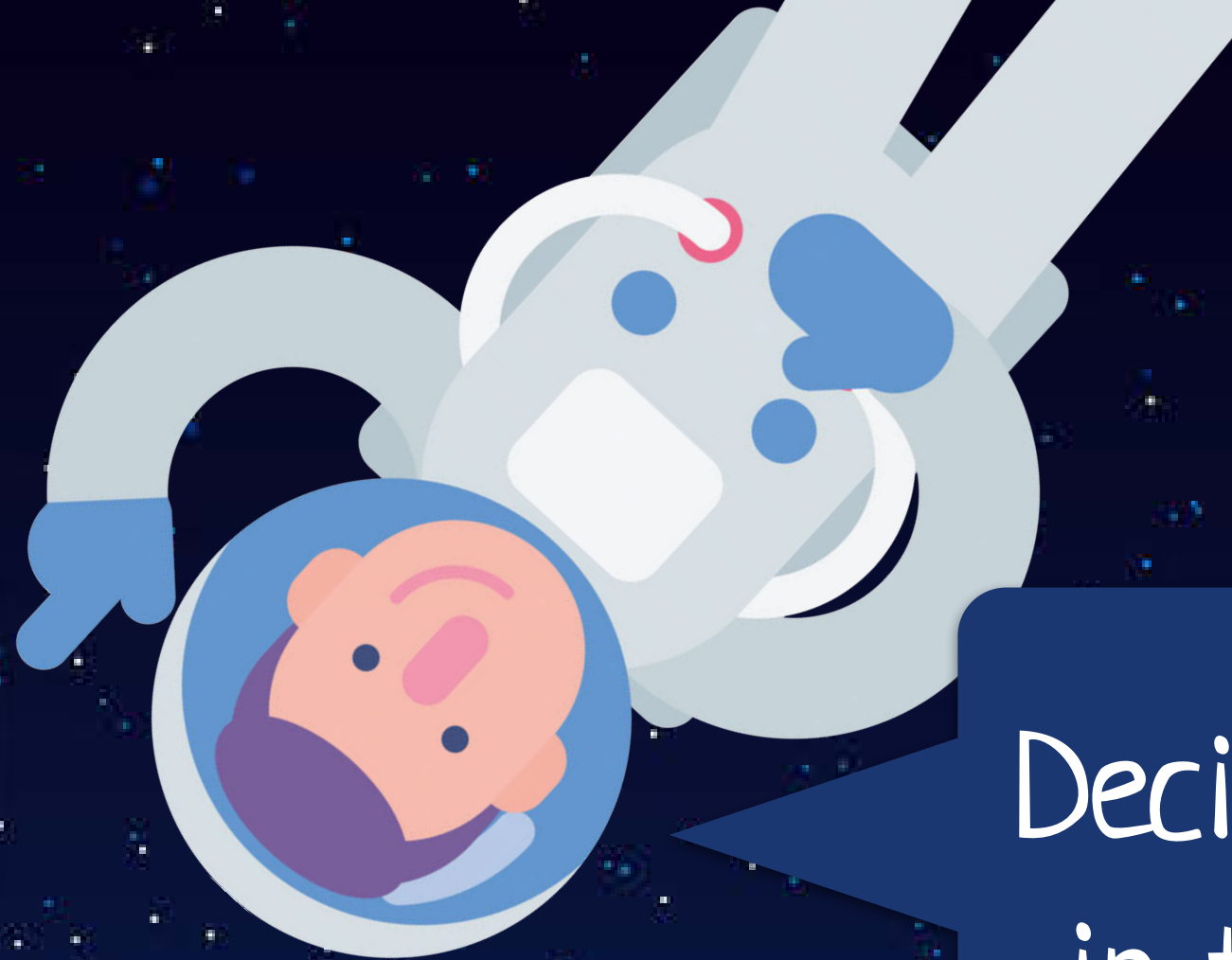
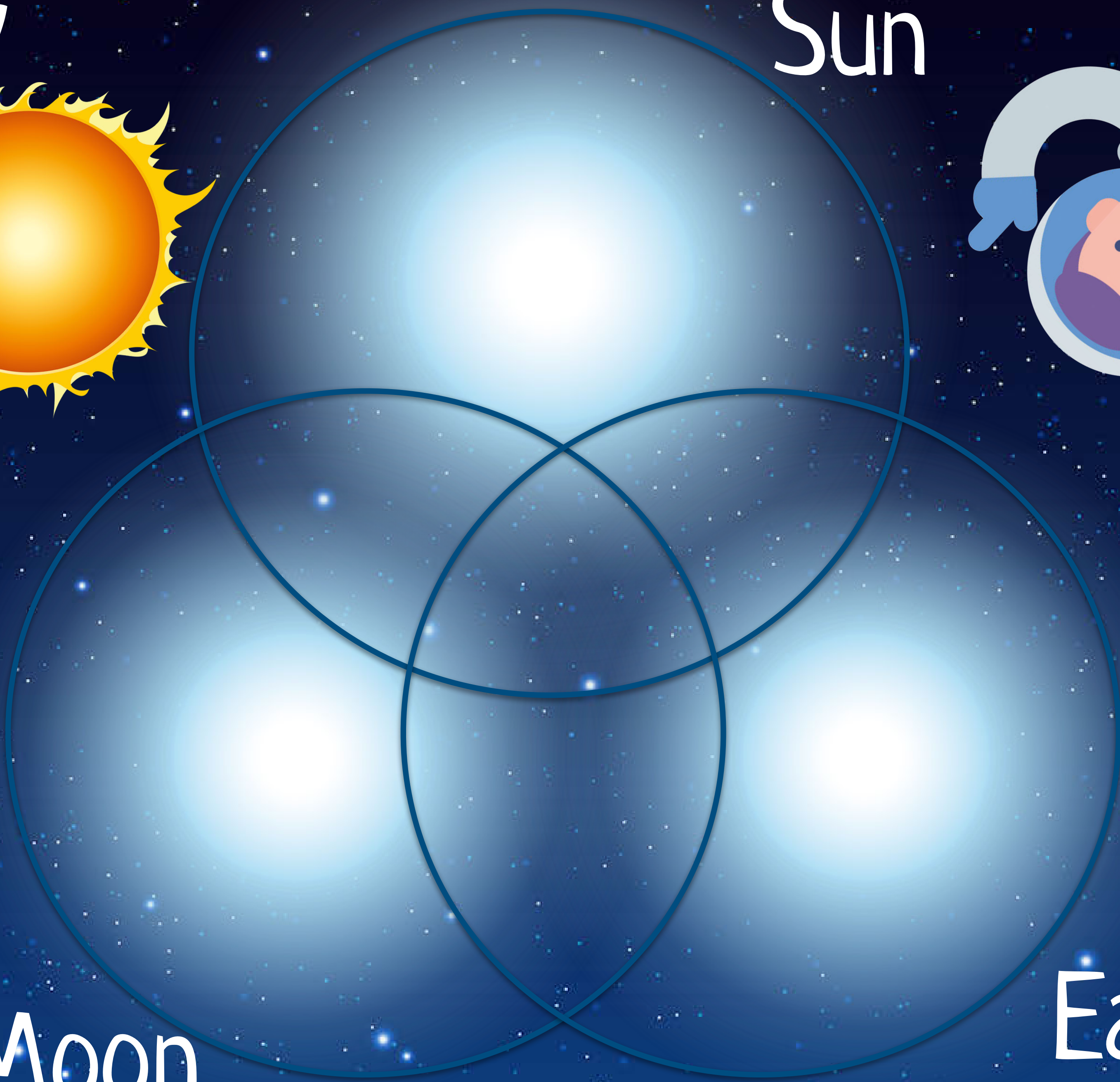
How long does
it take the
Moon to orbit
Earth?

Let's make a human
model of the Sun, Moon and
Earth!
As we create it, think about
these questions.



Plenary

Sun



Decide where in the Venn diagram each fact card should go. Can you think of any of your own facts?



Earth

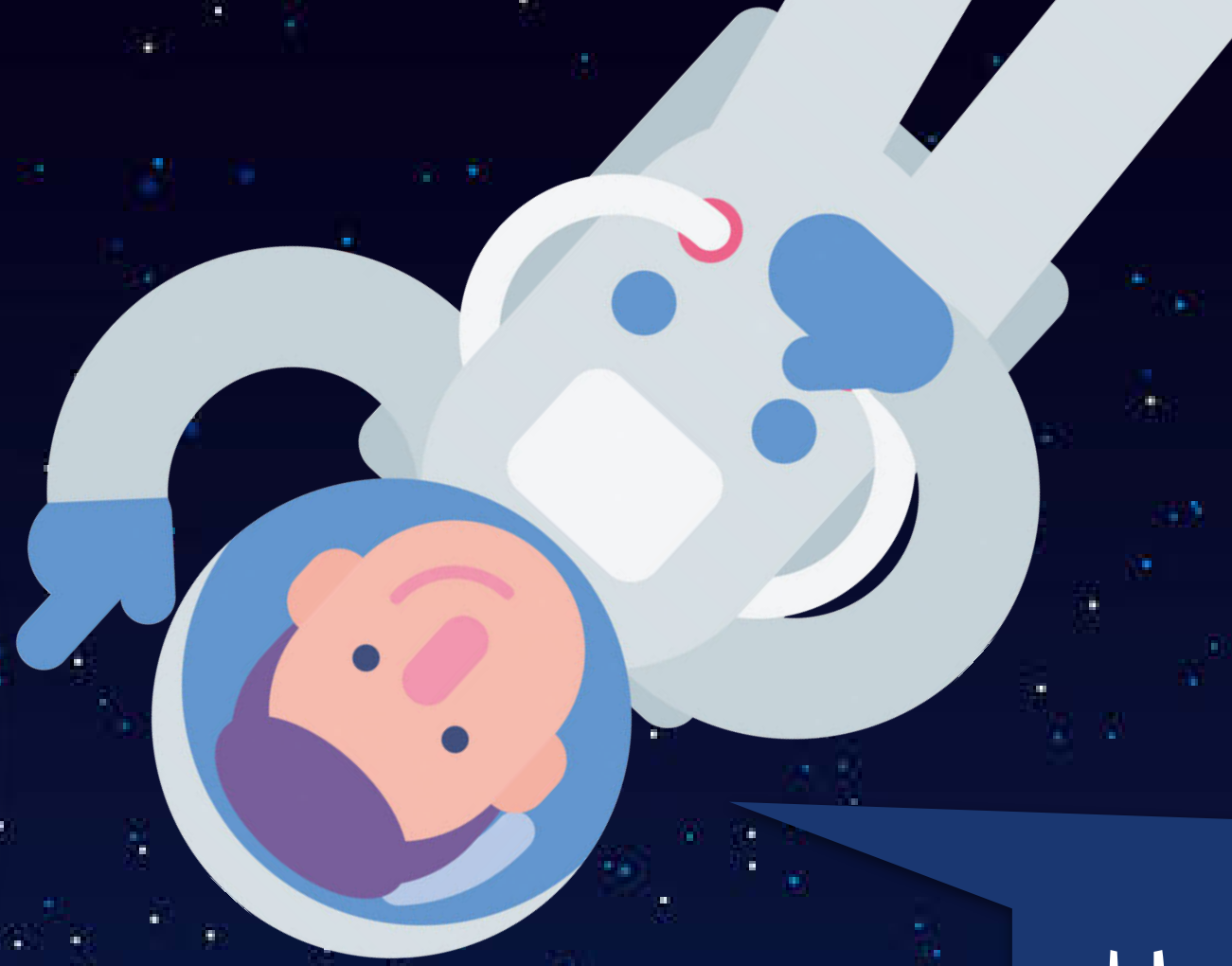


Moon



Plenary

Sun



How did you
do?
Which fact did
you find most
interesting
today?



Earth

Moon

